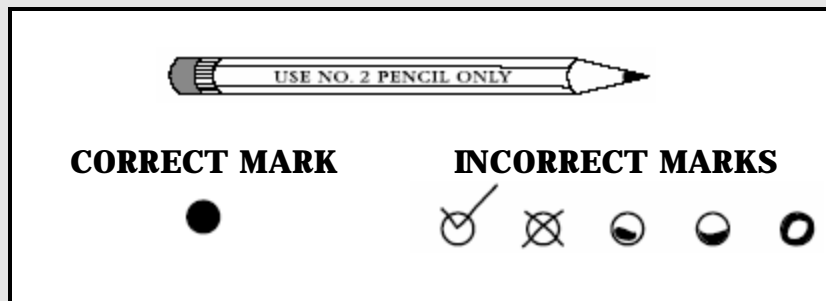


## Grade 2 Mathematics

WHEN ANSWERING QUESTIONS IN THIS TEST BOOKLET



- Use only soft black lead pencil (No. 2).
- Do NOT use ink or ball point pen.
- When marking your answers to multiple-choice questions, mark heavy, dark marks that completely fill the circle. Mark one answer for each question.
- Erase completely any marks you wish to change.
- Make NO STRAY marks on any page of your test booklet.
- For the open-response questions, be sure you write your answers on the lines and spaces provided. Answers or parts of answers written outside the boxed areas cannot be scored.

*The following is the guide that will be used to evaluate your responses to the open-response questions in this test.*

# KENTUCKY GENERAL SCORING GUIDE

**SCORE  
POINT 4**

- **You complete all important components of the question and communicate ideas clearly.**
- **You demonstrate in-depth understanding of the relevant concepts and/or processes.**
- **Where appropriate, you choose more efficient and/or sophisticated processes.**
- **Where appropriate, you offer insightful interpretations or extensions (generalizations, applications, analogies)**

**SCORE  
POINT 3**

- **You complete most important components of the question and communicate clearly.**
- **You demonstrate an understanding of major concepts even though you overlook or misunderstand some less-important ideas or details.**

**SCORE  
POINT 2**

- **You complete some important components of the question and communicate those components clearly**
- **You demonstrate that there are gaps in your conceptual understanding.**

**SCORE  
POINT 1**

- **You show minimal understanding of the question.**
- **You address only a small portion of the question**

**SCORE  
POINT 0**

- **Your answer is totally incorrect or irrelevant**

**BLANK**

- **You did not give any answer at all.**

Please mark your answer for each multiple choice question by filling in the circle completely for the correct answer. Mark only one answer for each question. If you do not know the answer, make your best guess.

1. How many inches are in 1 foot?
  - ? 6
  - ? 8
  - ? 12
  - ? 14
  
2. 6 inches is equal to \_\_\_\_\_.
  - ?  $\frac{1}{3}$  of a foot.
  - ?  $\frac{1}{2}$  of a foot.
  - ? 1foot.
  - ? 2 feet.
  
3. 2 feet is equal to\_\_\_\_\_ inches.
  - ? 12
  - ? 18
  - ? 24
  - ? 36

PLEASE GO ON TO THE NEXT PAGE →


# MATHEMATICS OPEN-RESPONSE QUESTIONS

Read all parts of each open response question before you begin. Write your answers to the open response questions in the space provided in this test booklet. For each open response question, use the grid provided in the test booklet to create any required charts or graphs. If a question does not require a chart or graph, write your written response over the grid lines.

**Write your answer to question 6 in the space provided on the next page.**

## *The New Desk*

4. Ms. Jones has just bought a new desk. She wants to make sure that it will fit through the classroom doorway before it is delivered. The doorway is 3 feet wide. The new desk is 31 inches wide.
- A. Will the desk fit through the doorway?
  - B. Explain, in as many steps as you need, how you came up with your answer.

**Do not write on this page. Please write your answer to this open-response question on the next page. **

PLEASE GO ON TO THE NEXT PAGE →

4

**All parts are answered correctly.  
Answers are clearly stated.  
Your answer is stated in a way so that others would be able to understand it.  
You answered the question in a way that shows that you understand the question.  
A sufficient number of steps were used to correctly answer the question.**

# MATHEMATICS

4

