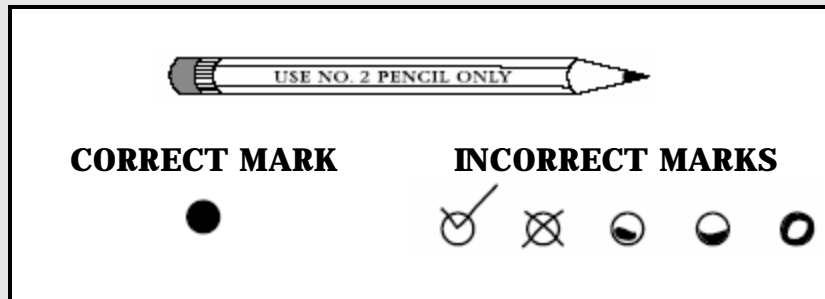


Grade 7th
Content: Reading

WHEN ANSWERING QUESTIONS IN THIS TEST BOOKLET



- Use only soft black lead pencil (No. 2).
- Do NOT use ink or ball point pen.
- When marking your answers to multiple-choice questions, mark heavy, dark marks that completely fill the circle. Mark one answer for each question.
- Erase completely any marks you wish to change.
- Make NO STRAY marks on any page of your test booklet.
- For the open-response questions, be sure you write your answers on the lines and spaces provided. Answers or parts of answers written outside the boxed areas cannot be scored.

The following is the guide that will be used to evaluate your responses to the open-response questions in this test.

KENTUCKY GENERAL SCORING GUIDE

**SCORE
POINT 4**

- **You complete all important components of the question and communicate ideas clearly.**
- **You demonstrate in-depth understanding of the relevant concepts and/or processes.**
- **Where appropriate, you choose more efficient and/or sophisticated processes.**
- **Where appropriate, you offer insightful interpretations or extensions (generalizations, applications, analogies)**

**SCORE
POINT 3**

- **You complete most important components of the question and communicate clearly.**
- **You demonstrate an understanding of major concepts even though you overlook or misunderstand some less-important ideas or details.**

**SCORE
POINT 2**

- **You complete some important components of the question and communicate those components clearly**
- **You demonstrate that there are gaps in your conceptual understanding.**

**SCORE
POINT 1**

- **You show minimal understanding of the question.**
- **You address only a small portion of the question**

**SCORE
POINT 0**

- **Your answer is totally incorrect or irrelevant**

BLANK

- **You did not give any answer at all.**


OPEN-RESPONSE QUESTIONS

Read all parts of each open response question before you begin. Write your answers to the open response questions in the space provided in this test booklet. For each open response question, use the grid provided in the test booklet to create any required charts or graphs. If a question does not require a chart or graph, write your written response over the grid lines.

Write your answer to question 6 in the space provided on the next page.

Name of story from which the passage is obtained:

6. The author uses foreshadowing to give you clues to the story's climax.
- A. Identify one example of foreshadowing used in the story.
 - B. From this example predict what the story's climax will be. Include the characters involved in the climax, and a summary of the action.

Do not write on this page. Please write your answer to this open-response question on the next page. 

CORE CONTENT:**Scoring Guide****Primary Academic Expectation:**

1.2 Students will make sense of material they read.

Primary Core Content Code:

RD-07-2.0.3 Students will identify or explain the use of literary elements in a passage.

RD-07-2.0.7 Students will make predictions, draw conclusions, make generalizations or make inferences based on what is read.

Secondary Academic Expectation:**Secondary Core Content Code:**

Score	Description
4	<p>A. Student gives a correct example of foreshadowing. B. Describes a climax that connects to the foreshadowing example. Identifies the characters. Gives an insightful prediction of the action.</p>
3	
2	

1	
0	Student's response is totally incorrect or irrelevant.
Blank	No student response.